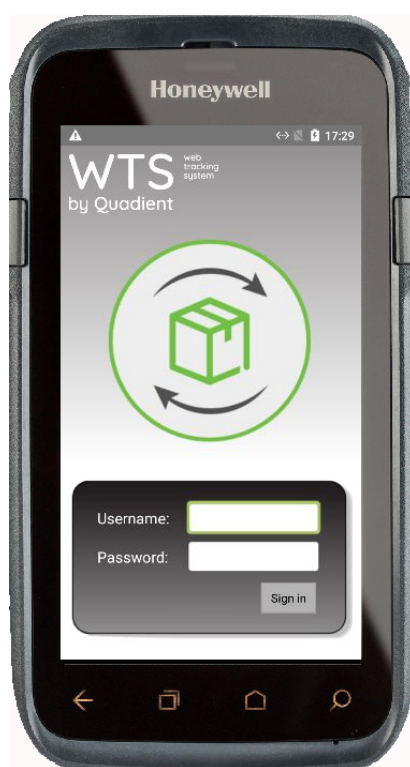




# WTS Cloud

## Subprint Guide

V1.1  
January 30<sup>th</sup>, 2020



# 1 Introduction

Here is a quick guide to explain how Subprint works as well as how to setup Subprint.

## 2 Why we use Subprint?

Currently, Java is only supported in Internet Explorer and does not work in Firefox nor Chrome as NPAPI plugin support has been removed for security reasons from these browsers. Installation of Subprint overcomes this issue by allowing the use of printing to a thermal label printer without requiring a Java Plugin.

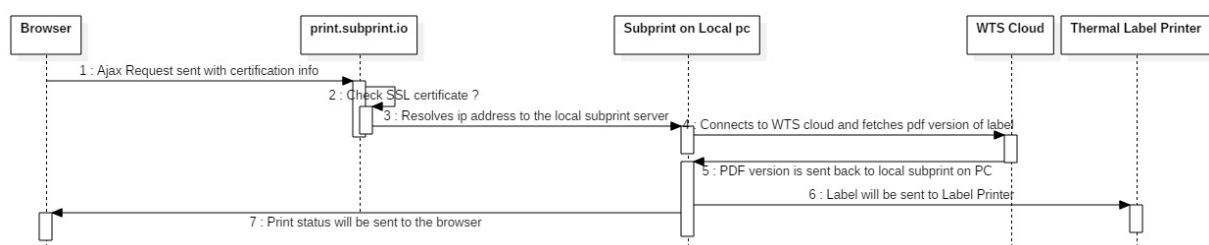
With our external Subprint App, you will not worry about updating java, side effects of new updates on each browser, using the correct browser or whether it will be supported in the future. Upon installing Subprint, a validated certificate will be installed on the local pc that allows a secured communication between local machine and the domain `subprint.print.io`.

## 3 How Subprint works?

When user receives a package or browses to Package Detail View page and presses on Print Label button, an Ajax request will be sent to `https://print.subprint.io:45193/print`. The `print.subprint.io` domain is only used to support using an SSL certificate for HTTPS connections and after validating the certificate, it resolves to the local computer address. Resolving to the local computer address means that the Ajax call now will take the IP address of the local machine. In other words, print request will be redirected to local Subprint server on PC. The browser is now connected to local Subprint server which sends print request and waits for a response.

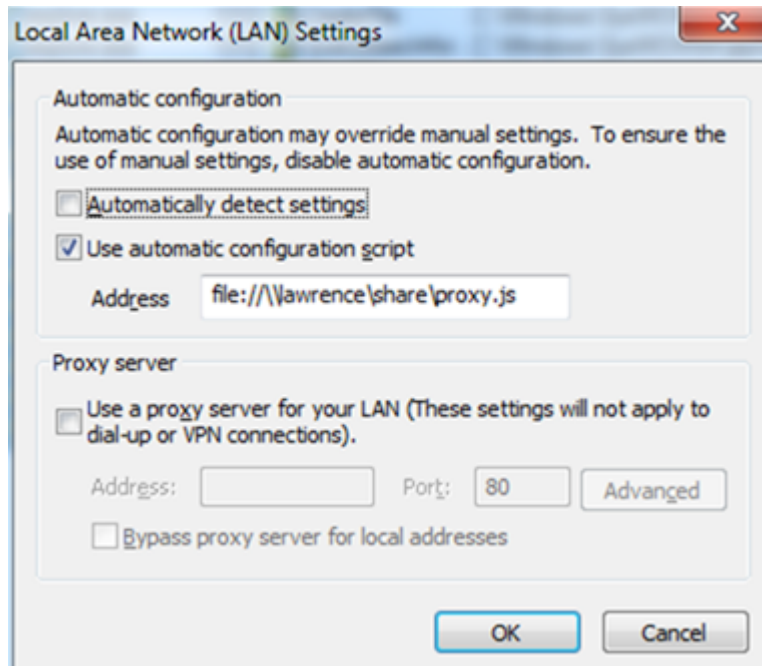
Now Subprint on local machine connects to cloud site (`wtscloud.neopost.com`), requests the pdf to print and prints the label with the specified printer.

Finally, Subprint on the local machine sends a status response back to the browser.



## 4 How to configure Subprint when there is a proxy in place?

In order to configure Subprint when a proxy has been configured, first please open Control Panel > Internet options screen, then go to Connections tab and press on Network Settings button at the bottom of this window.



There will be 3 possible cases:

- 1) Option "**Automatically detect settings**" is selected. In this case, Subprint should function as expected and if this is not the case, you should contact Quadient support team to fix this issue for you.
- 2) Option "**Use Automatic configuration script**" is selected. In this case, a proxy auto-config file is used to define how web browsers and other agents can automatically choose the appropriate proxy server for fetching a given URL. In this case, domain Subprint.io needs to be added to Proxy.js file. Here is an example of how it has been done for our clients:

Network administrator will look for function **function FindProxyForURL(url, host)** in Proxy.js file and add **dnsDomainIs(host, ".subprint.io")** to this file.

```
if (dnsDomainIs(host, ".XXX.XX.XXX") ||  
    dnsDomainIs(host, ".subprint.io") ||  
    return "DIRECT";  
}
```

- 3) Option "**Use a proxy server for your LAN**" is set. In this case, you need to copy Proxy address and Port number (and ask network administrator for a valid User

name and Password, if necessary) and add these settings to Subprint Settings screen.

In order to open Subprint Settings screen, please look for this icon in Windows Task bar and right-click on this icon to open Subprint Settings screen.



Please check "Use Proxy for web requests" and fill in required information for proxy settings.

SubPrint Settings

Listening Port: 45192 Secure Port: 45193

Default Printer Name: Microsoft Print to PC

Use proxy for web requests

Address:  Port: 0

Username:

Password:

Start SubPrint on system startup

Check For Updates

Save Settings Cancel

Please press on Save Settings button to save this configuration.