

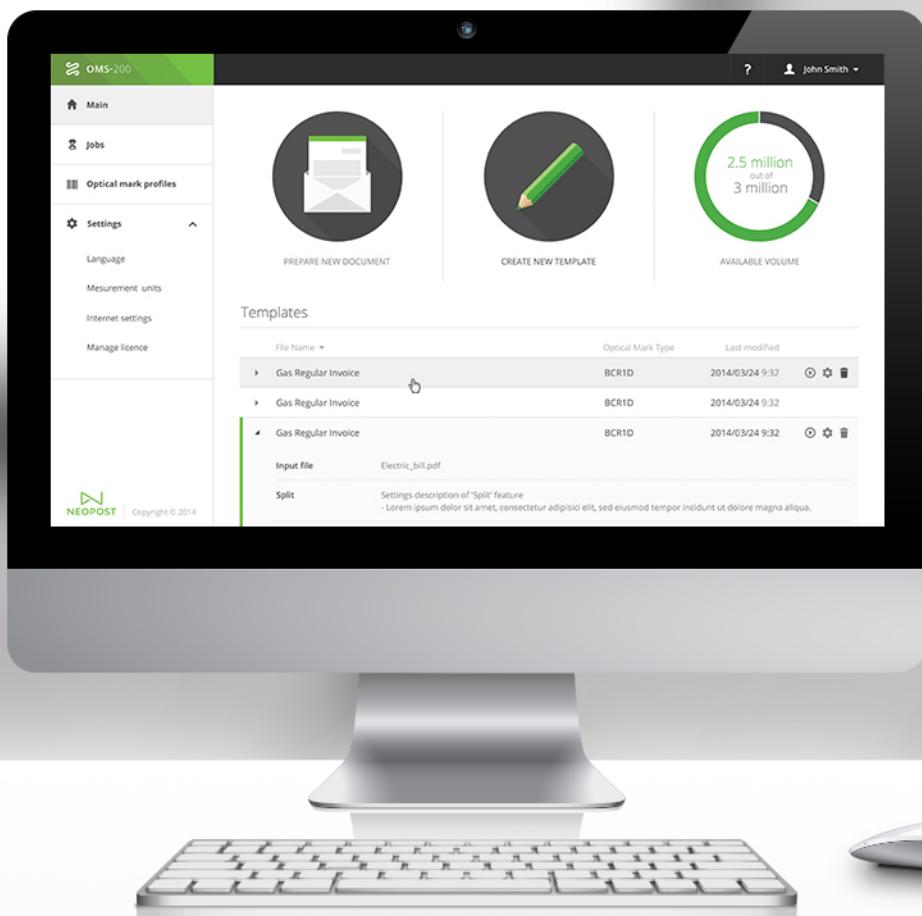
Send  
Receive  
Connect

# Installation Guide



## OMS-200

version 1.1



# OMS-200

## INSTALLATION GUIDE

Product version 1.1

Document version 1.1.0.1

Release date: April 2015

## NEOPOST

[www.neopost.com](http://www.neopost.com)

Should you have any queries, suggestions or comments concerning these materials, please do not hesitate to contact us at [documentation@gmc.net](mailto:documentation@gmc.net).

This document contains information classified as **Public**.

## COPYRIGHT

Information contained within this document may contain technical inaccuracies or typographical errors. Changes will be added periodically and modifications will be made thereto without prior notification. Neopost does not enter into any obligations or responsibilities regarding the content of this document and does not assume any legal liability – neither expressed or implied – for its accuracy, completeness and/or usefulness.

Copying of the software or manual on to any data storage medium or in any other way, except for explicit company internal use, is strictly forbidden without the prior written authorization of Neopost. Failure to comply with these restrictions is liable to prosecution.

## TRADEMARKS

Neopost and its logo are trademarks and service marks of Neopost S.A., 113 rue Jean Marin Naudin, 92220 Bagneux, France, #402 103 907 R.C.S. Nanterre.

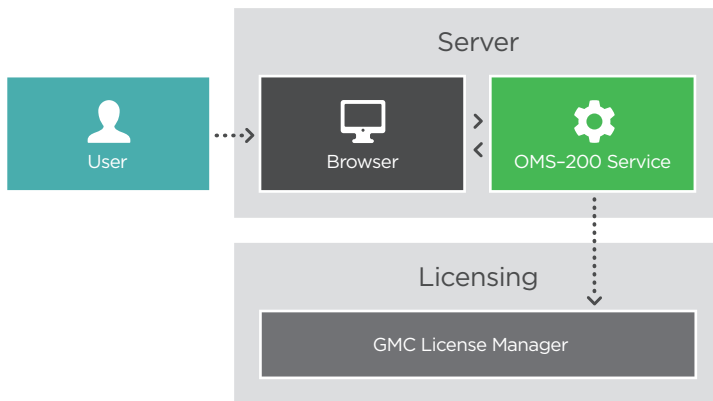
© 2015 Neopost. All rights reserved.

## Table of Contents

1	Deployment .....	4
2	Application Requirements .....	5
2.1	HW and SW Requirements .....	5
2.2	Licensing .....	5
2.3	Installer .....	5
3	Installation .....	6
4	Post Installation Steps .....	10
4.1	Login .....	10
5	Troubleshooting .....	11
5.1	Performance Optimization .....	11
5.2	GMC License Manager is Licensing Other Applications .....	12
5.3	Insufficient Rights .....	13
5.4	Data Backup .....	14
6	Uninstallation .....	15

# 1 Deployment

A typical OMS-200 deployment model is structured as follows:



1. Configure OMS-200 via the application web interface using one of the supported browsers.
2. Upload files into OMS-200 via the application web interface.
3. Licensing is ensured via GMC License Manager.

## 2 Application Requirements

### 2.1 HW and SW Requirements

Minimum hardware (processor, memory etc.) and software (operating system, database etc.) requirements are described in the Release Notes of the corresponding application version.

**TIP** To avoid any complications, make sure your system is not being updated at the time of OMS-200 installation.

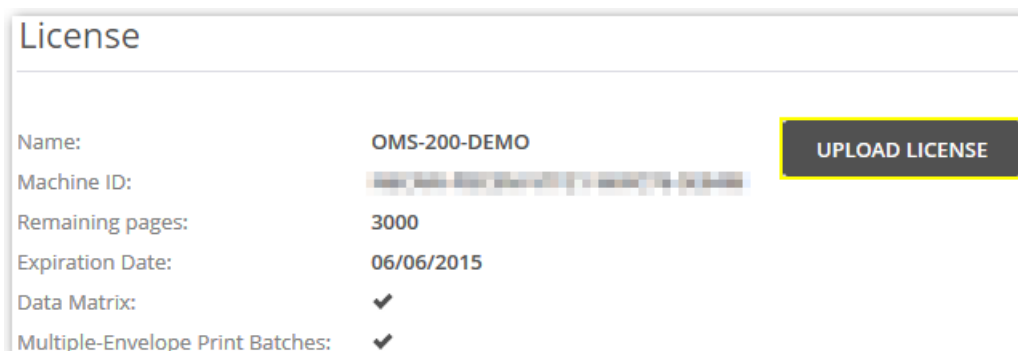
### 2.2 Licensing

OMS-200 installed with the demo license can only produce documents labeled with a watermark. To disable this watermark and to start using OMS-200 for production purposes, you must activate a license purchased from Neopost.

To obtain the license, contact [neolicense@gmc.net](mailto:neolicense@gmc.net) and fill in the order form. You will require a machine ID, which you can get after you install OMS-200: Go to **Settings | License**).

Unless you [installed](#) OMS-200 with your license (a ZIP file) embedded in it, activate the license using the OMS-200 web interface:

1. Go to the **Settings | License** section of OMS-200.
2. Click on **Upload license** and browse for the license in the pop-up dialog.



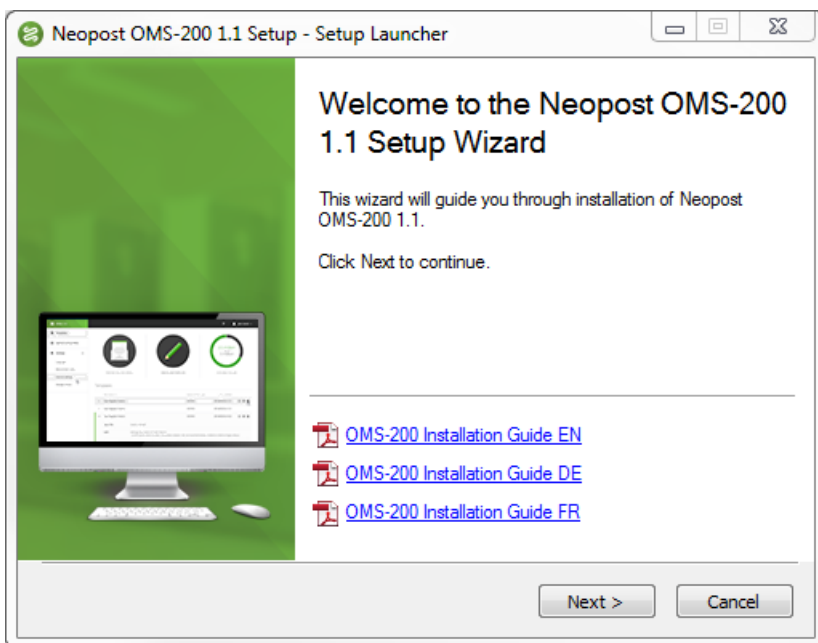
License	
Name:	OMS-200-DEMO
Machine ID:	[blurred]
Remaining pages:	3000
Expiration Date:	06/06/2015
Data Matrix:	✓
Multiple-Envelope Print Batches:	✓

### 2.3 Installer

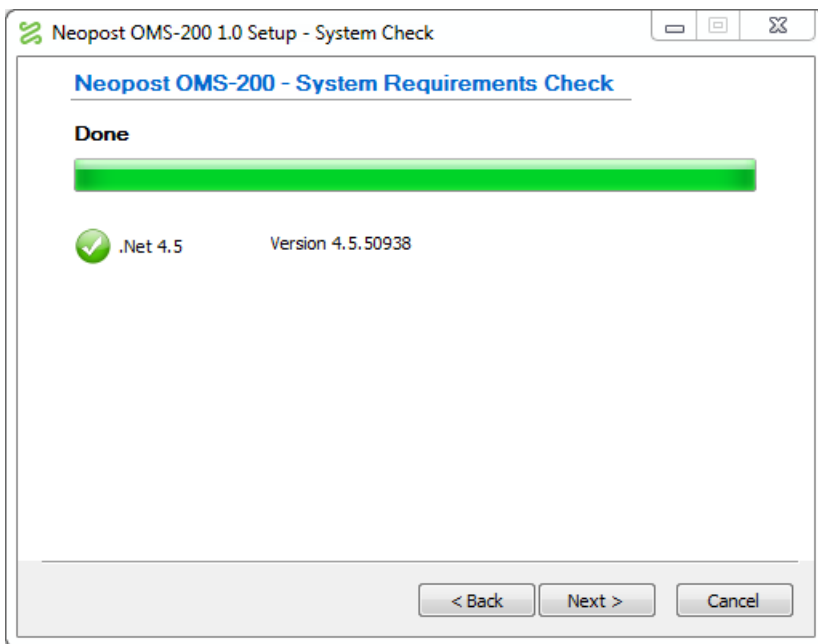
To install OMS-200, you need the [Setup-OMS-200-<version>.exe](#) installer file.

### 3 Installation

1. Run the `Setup-OMS-200-<version>.exe`:

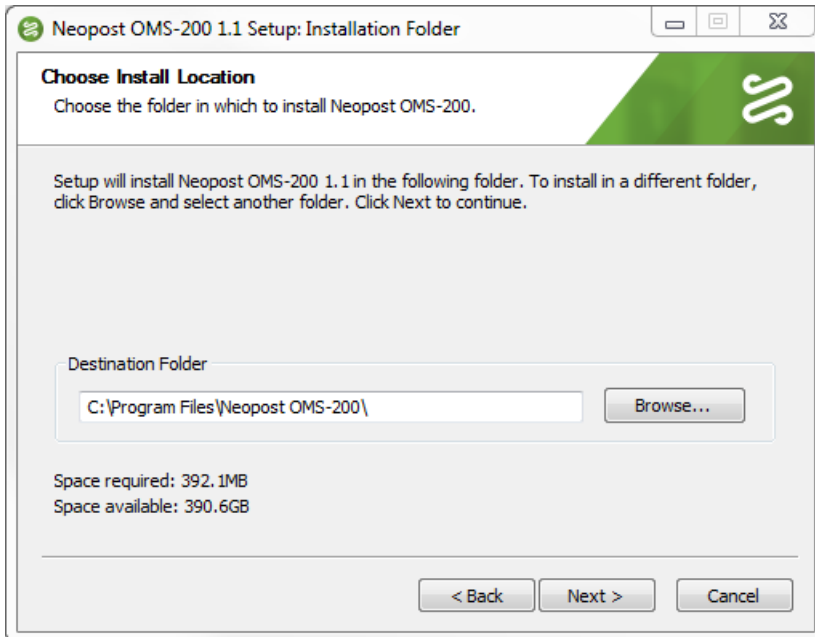


2. Click on **Next** to run the **System Requirements Check** that checks whether your system complies with the software requirements described in the Release Notes of the corresponding application version.

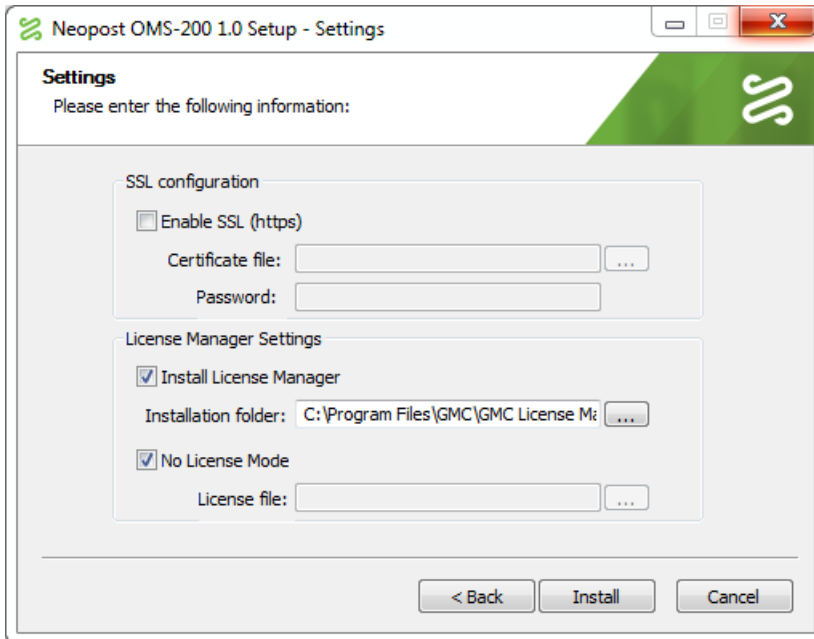


3. Click on **Next** to display the End-User software license agreement.

4. Click on **I Agree**, to continue the installation with the Choose Install Location step.



5. Select a suitable directory (e.g. inside your Program Files directory) and click on **Next** to open the Settings step:



### SSL configuration

**Enable SSL (https)** Check to use the secure https protocol making the following options available:

- **Certificate file** – Selects and uploads the certificate file.
- **Password** – Enters a password required for the certificate file.

### License Manager Settings

**Install License Manager** GMC License Manager must be installed on your computer for OMS-200 to process your license. Select to install it if you have not done so separately.

- **Installation folder** – If you are installing the license manager, define where on your computer you wish to install it.

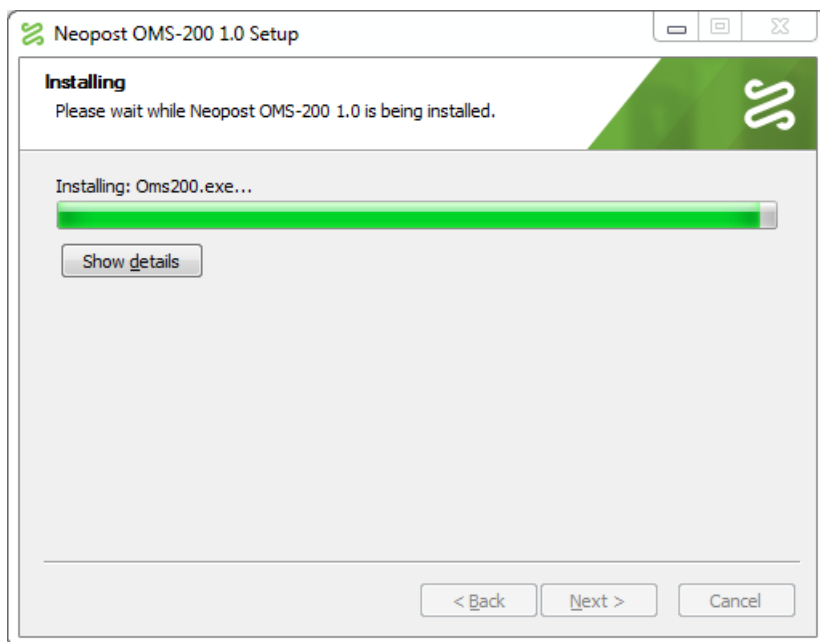
**No License Mode** When installing GMC License Manager as a first-time user, you can select to install it in the **No License Mode**. This allows you to get acquainted with the application for free, however, it lacks the option of producing any output.

- **License file** – If your dealer provided you with a demo license or if you purchased a production license before installing OMS-200, install the application with it by deselecting the **No License Mode** and browsing for the ZIP license file. This contains the option to produce output.

**NOTE** Follow the instructions in the [Licensing](#) section to activate a purchased license after installation.



6. Configure the settings you require and click on **Install** to watch the installation progress.



7. When the installation finishes, click on **Finish**.

**NOTE** If the installation procedure fails, then all the installed files are automatically removed and the installation dialog is closed.

## 4 Post Installation Steps

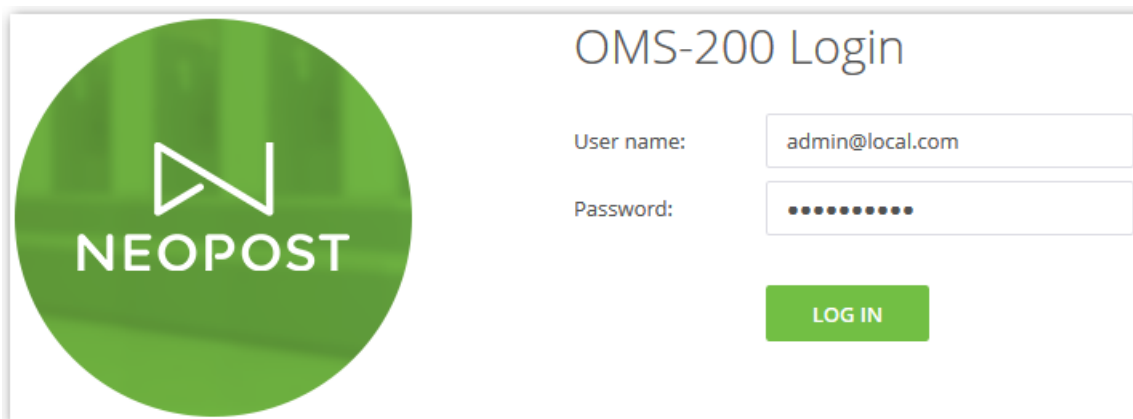
### 4.1 Login

To log into OMS-200:

1. Run the application by clicking on the **OMS-200** shortcut icon on your desktop.



2. Enter the default administrator credentials in the **Log in** screen:

A screenshot of the OMS-200 login screen. On the left is a large green circle containing the NEOPOST logo. On the right, the title 'OMS-200 Login' is displayed. Below the title are two input fields: 'User name:' with the value 'admin@local.com' and 'Password:' with a masked password of ten dots. A green 'LOG IN' button is positioned below the password field.

- **User name** - admin@local.com
- **Password** - TestOms200

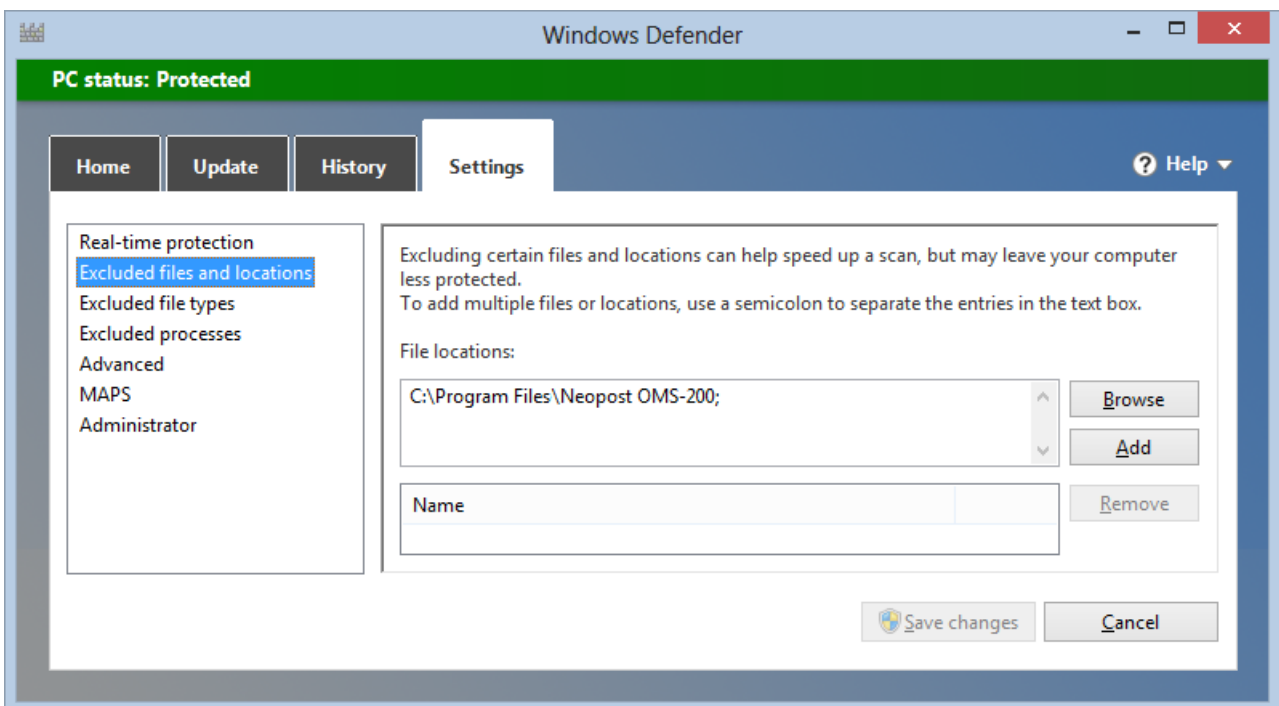
3. Click on **LOG IN** to log in to the application.
4. Before adding new users to the company account, change your credentials in the **Settings | User Management** section of OMS-200.

## 5 Troubleshooting

### 5.1 Performance Optimization

Performance may slow down significantly if you are using Windows Defender (or other antivirus software). To optimize performance, you can exclude the processes connected with OMS-200 from the list of processes scanned by Windows Defender:

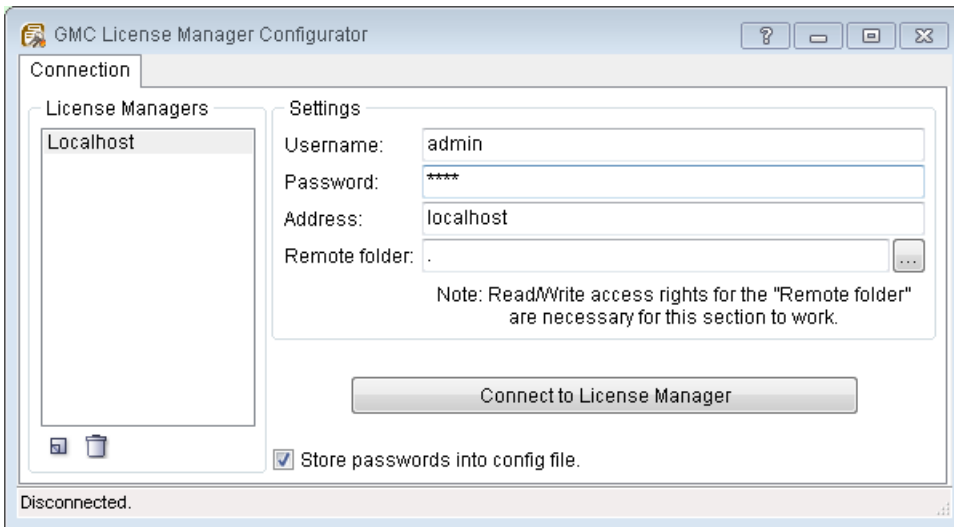
1. Go to **Windows Defender | Settings** and click on *Excluded files and locations*.
2. In **File locations**, select the folder where you installed OMS-200.



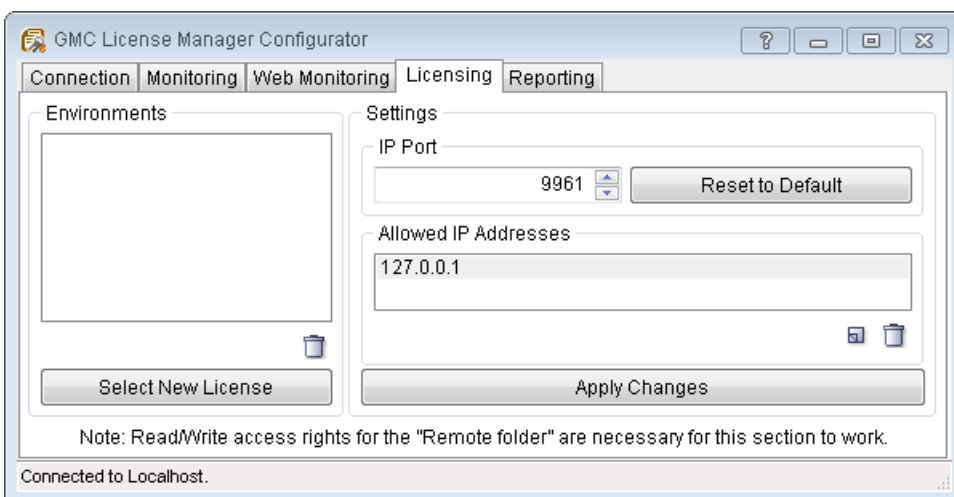
## 5.2 GMC License Manager is Licensing Other Applications

When installing OMS-200 without GMC License Manager, because another GMC application is already running on your system, you will be unable to activate your license via the OMS-200 web interface. In this case, activate your license as follows:

1. For the purposes of these instructions, stop all GMC Inspire Designer Content Manager services except for the GMC License Manager service.
2. Run GMC License Manager Configurator.

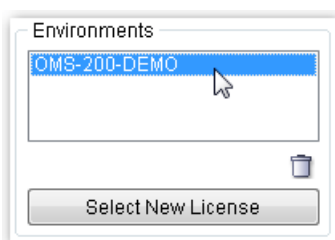


3. Click on **Connect to License Manager**.
4. Open the **Licensing** tab.

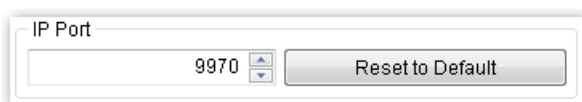


5. Click on **Select New License** and browse for your license ZIP file.

6. Select the newly added license **Environment**.



7. Set the **Environment** to a free **IP Port** (e.g. 9970) to avoid disabling the other applications already licensed via GMC License Manager.



**NOTE** The default GMC **IP Port** is 9961.

8. Click on **Apply Changes**.
9. Restart the GMC License Manager service.
10. Go to the OMS-200 installation folder (typically in `C:\Program Files\Neopost OMS-200\`).
11. Open the `Oms200.exe.config` file.
12. Change the `<add key="LicenseServer" value="localhost"/>` value to `<add key="LicenseServer" value="localhost:9970"/>`.
13. Save the file.
14. Restart the Oms200 service.

**NOTE** Repeat the above instructions after every re-installation or newer version update.

## 5.3 Insufficient Rights

If your installation fails to complete, make sure that the system user running the OMS-200 service (Windows service) has sufficient rights to access the `C:\Windows\Microsoft.NET\Framework64\v4.0.30319\Config\machine.config` file.

## 5.4 Data Backup

To back up custom created objects and uploaded files:

1. Close the browser tab running OMS-200
2. Go to **Task Manager | Services** and stop the Oms200 service.
3. Go to the OMS-200 installation folder (typically in `C:\Program Files\Neopost OMS-200\`).
4. Make a copy of the `BlobStore` and `EventStore` folders.

## 6 Uninstallation

Uninstall OMS-200 using one of the following methods:

- Go to the **Control Panel | Programs and Features** dialog of your Windows OS, select the OMS-200 entry (according to its name) and uninstall it.
- Run the [uninst.exe](#) file in the OMS-200 installation folder.

The uninstallation keeps the following folders (containing custom created objects and configurations) on your computer so you can resume your work in the future:

- BlobStore
- EventStore
- LogArchive