

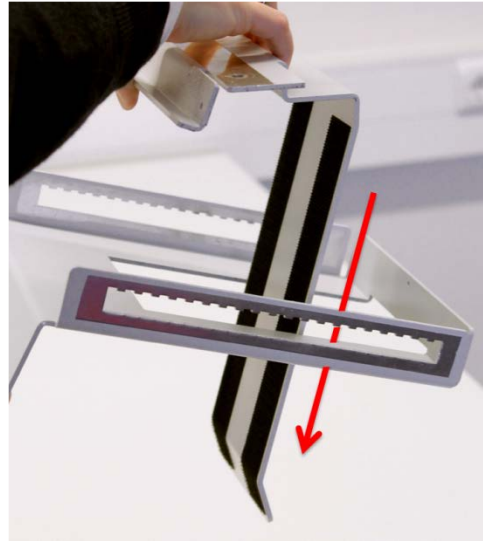
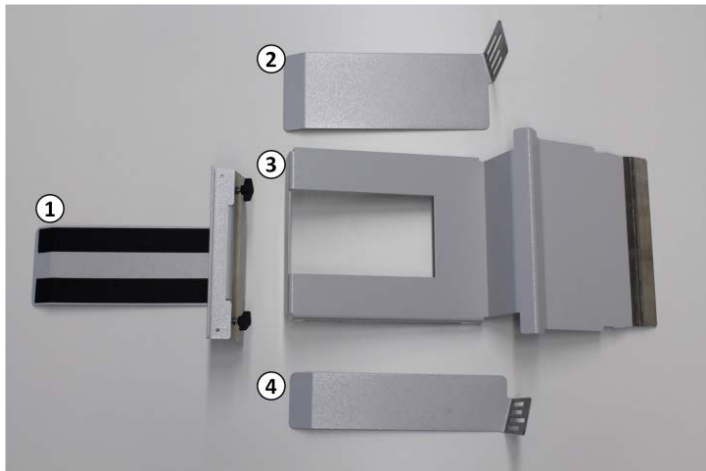
Mounting Instruction 126: Catch Tray A0023967



For adjusting the Catch Tray see the User Guide.

Contents:

- | | | |
|----|--------------------------|----------|
| 1. | Backstop Assy | A0056270 |
| 2. | Side guide ext. Drive | A0048674 |
| 3. | Tray Base | A0016147 |
| 4. | Side guide ext. Operator | A0048634 |



1

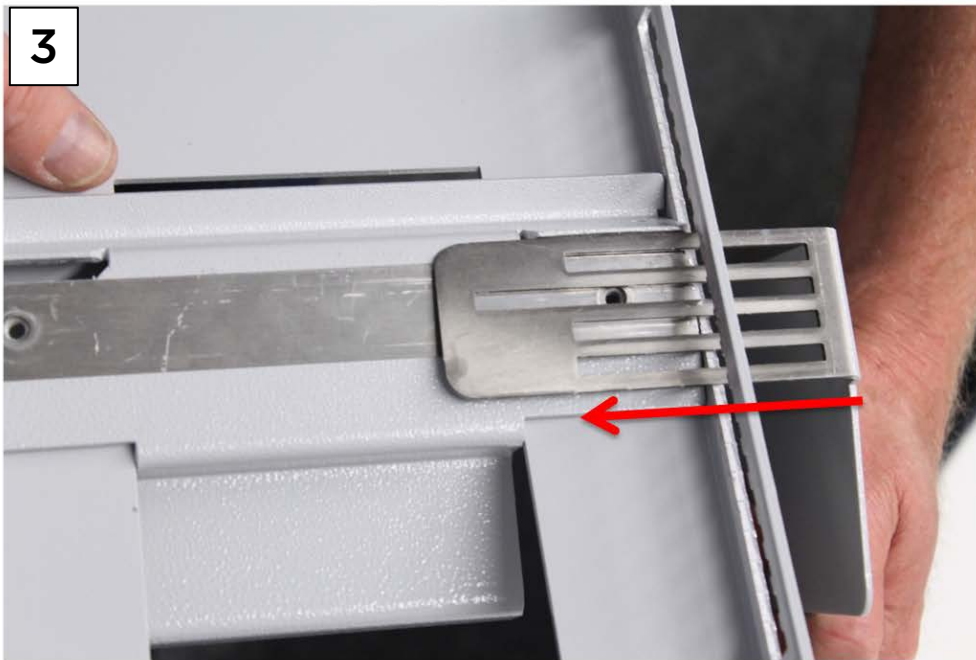
Slide the Backstop assy into the Tray Base.



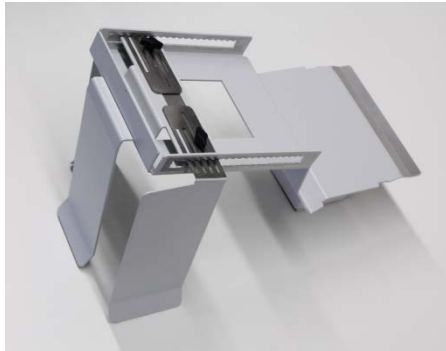
2

Make sure the bottom of the Backstop Assy rests against the Tray Base.

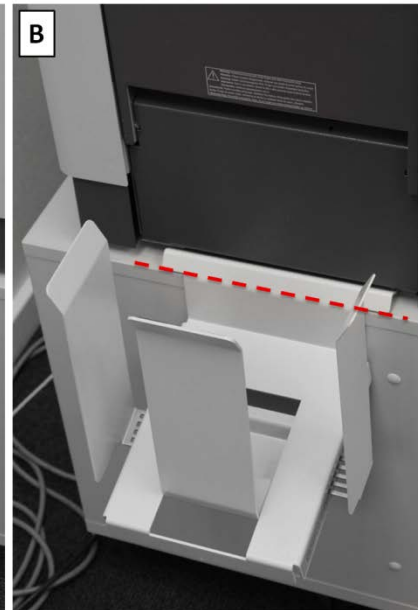
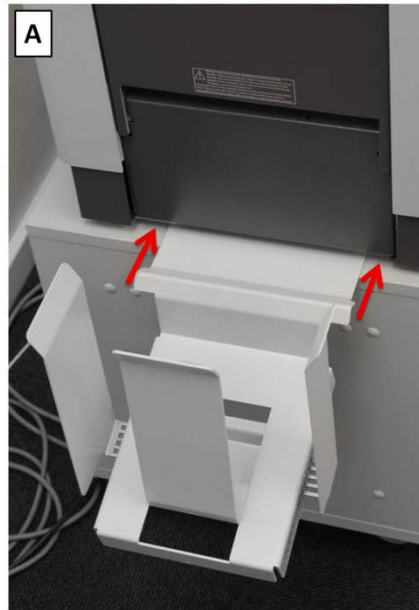
Note: Keep the Backstop Assy angled so a gap at the side opening appears.



- 3** Slide the bottom of the Side guide into the opening of the Tray Base.
- 4** Tighten the parts together with the wing bolt and washer.
- 5** Repeat Step 3 and 4 for the other side.



The catch tray is now assembled.



- 6** Slide the catch tray between the feet of the Inserter Head until it is aligned against the furniture.



10/2015
Version A